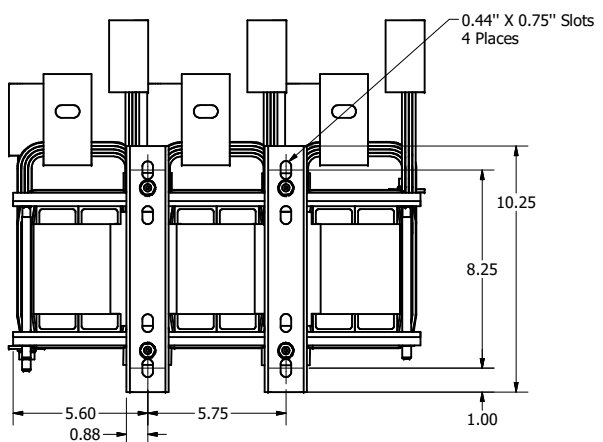
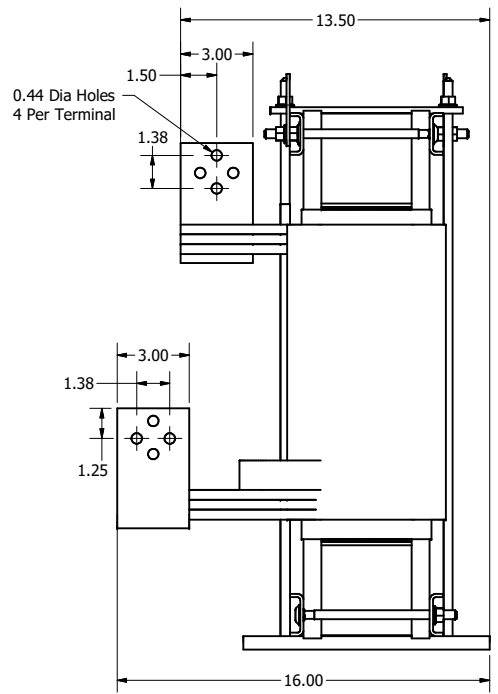
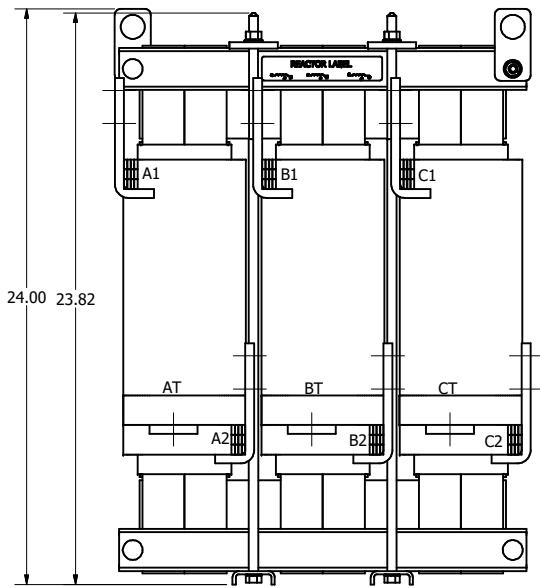
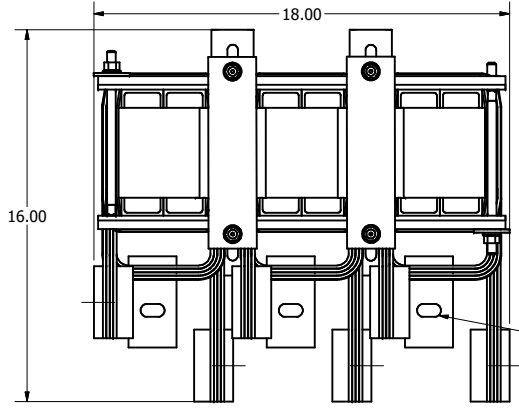
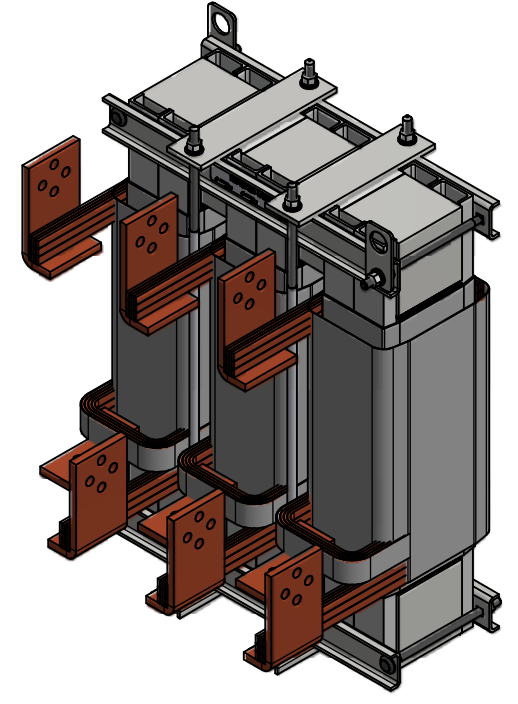


HP	TCI Part #	Rated Amps (A)	Max Amps (A)	uH +/-5%	Weight (LBS)
800	KDRX3STT	773	960	107.2	425

System Voltage, 480V, 60Hz.



Customer Is Responsible For Installation to Meet All National And Local Electrical Codes.

TCI, LLC CLAIMS PROPRIETARY RIGHTS IN THE MATERIAL HEREIN DISCLOSED. IT IS SUPPLIED WITHOUT PREJUDICE TO ANY PATENT RIGHTS OF TCI AND MAY NOT BE REPRODUCED OR USED TO MANUFACTURE ANYTHING SHOWN THEREIN WITHOUT WRITTEN PERMISSION FROM TCI.

NO	REVISION	DATE	BY	SCALE
B	5149, Was KDRXS3TT	3/11/2020	DSW	FRACTIONAL
A	As Designed	1/30/2020	DSW	ANGULAR
NO				± 1°

Material(s) Shall be RoHS Compliant

**TCI** W132 N10611 Grant Drive  
Germantown, WI 53022

KDRX3STT, HGP Stretched Inductor,  
480V, 800HP

DRN BY: DSW DATE: 1/30/2020 108411DG  
SCALE: 1/4

SHT 1 OF 1